



# CLARKSON VALLEY

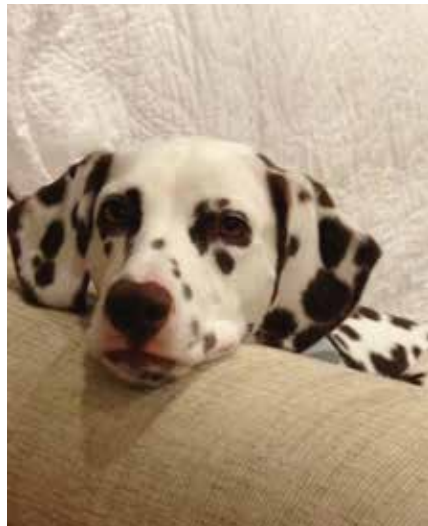
THE OFFICIAL PUBLICATION FOR  
THE RESIDENTS OF CLARKSON VALLEY

January 2017

# *Living*



## LOOKING BACK AT 2016



**YOUR STORIES. YOUR PHOTOS. YOUR COMMUNITY.**





# Encore

CONSIGNMENT GALLERY

*Home Décor Worthy of  
a Repeat Performance*



287 Lamp and Lantern Village  
Town and Country MO 63017  
636-220-9092 | [www.encorestl.net](http://www.encorestl.net)

# Salon Joli & Spa

..... ★ ★ ★  
HAPPY NEW YEAR  
..... ★ ★ ★



*“Where  
style  
begins  
with you”*



*January  
Specials*

**BOGO SALE**

Buy 1 get one at  
50% OFF (selct Items)

\*No other discounts or specials. No special orders.

**636 386-5654**

333 Ozark Trail Drive, #20 Ellisville, MO

[www.salonjoliandspa.com](http://www.salonjoliandspa.com)

QUALITY & COMMITMENT FOR OVER 40 YEARS

FROM ELEGANT TO AFFORDABLE, WE DO IT ALL

18403 Wild Horse Creek  
Chesterfield, MO 63005

636.532.1158  
ApolloEnterprisesInc.com



CUSTOM HOMES & REMODELING  
RESIDENTIAL & COMMERCIAL



"We hired Apollo Enterprises to build us a new home. The custom home was the home of our dreams."

Custom Home Builder | Room Additions | Garage Additions  
Interior Remodeling | Basement Finishing | Hardwood Flooring  
Decks & Porches

APOLLO ENTERPRISES, INC. IS YOUR LOCAL BUILDER & REMODELER



**CLARKSON VALLEY City Officials**

For More Info please go to [www.clarksonvalley.org/cityOfficials.html](http://www.clarksonvalley.org/cityOfficials.html)

**MAYOR**  
**Scott Douglass**  
153 Chippenham Lane 63005-6803  
(Home) 636-394-8916  
rsdoug@sbcglobal.net

**ALDERMEN - 1ST WARD**  
**James Meyer**  
2033 Kehrsboro Drive 63005-6510  
(Home) 636-537-3110  
myrjms@aol.com

**Dan King**  
16834 Kehrsdale Dr. 63005-6530  
(Home) 636-530-1422  
danielking@sbcglobal.net

**ALDERMEN - 2ND WARD**  
**Honora Schiller**  
25 Chippenham Lane 63005-6801  
636-394-7900  
**honoras@msn.com**

**Amy Setnicka**  
27 Crown Manor Drive 63005  
636-346-4412  
asetnicka@dei-central.com

**ALDERMEN - 3RD WARD**  
**Scott Schultz**  
248 Pennington Lane 63005-6915  
(Home) 636-227-4771  
scottysch@prodigy.net

**Lin Midyett**  
2336 Kettington Road 63017-7326  
(Home) 636-230-5684  
lrml@charter.net

**CLERK AND  
TREASURER**  
**Michele McMahon**  
(Work) 636-227-8607  
cvcityhall@charter.net

**DEPUTY CLERK  
AND COURT CLERK**  
**Susan Prichard**  
(Work) 636-227-8607  
cvsusan@charter.net

**CITY OF  
CLARKSON VALLEY**  
636-227-8607  
[www.ClarksonValley.org](http://www.ClarksonValley.org)  
15933 Clayton Rd, Suite 105  
Ballwin, MO 63011 (In the Clarkson Executive Center)  
cvcityhall@charter.net

This newsletter should be considered "unofficial communication" and does not necessarily reflect the official position of the City of Clarkson Valley. An official position of the City shall only be communicated in letter form using City letterhead.

**n2 publishing™** [www.n2pub.com](http://www.n2pub.com)  
© 2017 Neighborhood Networks Publishing, Inc.

**IMPORTANT  
PHONE NUMBERS**

**EMERGENCY**  
**911** Fire, Ambulance, Police Emergency  
**811** Call Before You Dig  
**800-552-7583** Gas Emergency/Odor  
**800-552-7583** Electric Emergency/Power Outage  
**314-772-5200** Poison Control Center

**NON-EMERGENCY**  
**636-529-8210** Police (Non-Emergency)  
**314-615-0700** Vacation Check Requests  
**314-615-0700** 7th Precinct

**UTILITIES**  
**314-621-6960** Laclede Gas  
**636-992-8904** Ameren UE  
**314-991-0333** Missouri American Water  
**314-768-6260** Metropolitan Sewer District  
**866-570-4702** Waste Management

**DISCLAIMER:** Any articles included in this publication and/or opinions expressed therein do not necessarily reflect the views of N2 Publishing but remain solely those of the author(s). The paid advertisements contained within the *Clarkson Valley Living* magazine are not endorsed or recommended by N2 Publishing or the publisher. Therefore, neither N2 Publishing nor the publisher may be held liable or responsible for business practices of these companies. **NOTE:** When community events take place, photographers may be present to take photos for that event and they may be used in this publication.

Need a new Headshot  
or Group Photo?

We Offer:  
Individual or whole-office Headshots  
Company Profile Videos  
Branding Photography Packages

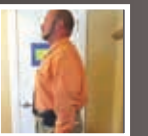
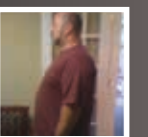
**EICHELBERGER PHOTOGRAPHY**  
(636)734-1486  
[www.EichPhoto.com](http://www.EichPhoto.com)

6 WEEKS TO A  
**NEW YOU!**

NO SHAKES, NO EXERCISE, NO PRE-PACKAGED FOOD.



WOW, WHAT CAN I SAY OTHER THAN THE CHIROTHIN WEIGHT LOSS PROGRAM IS AWESOME! I'VE LOST 53 POUNDS IN ONE 42 DAY CYCLE AND HAVE NOT FELT THIS GOOD IN OVER 15 YEARS. IF YOU'VE SUFFERED WITH BEING OVERWEIGHT, LET ME GIVE YOU SOME ADVICE: START THE CHIROTHIN PROGRAM ASAP! I KNOW IT MAY BE HARD TO BELIEVE, BUT I HAVE NOT BEEN HUNGRY AT ALL AND MY ENERGY LEVEL IS THROUGH THE ROOF! YOU'LL BE GLAD YOU DID. - ROLAND N.



**SAVE \$25**

LOSE 20LBS OR YOUR 2ND ROUND IS FREE!  
COUPON OFFER LIMITED TO 20 PEOPLE.

DOCTOR SUPERVISED  
**CHIROTHIN**  
WEIGHT LOSS PROGRAM

EXCLUSIVELY AT STROTHEIDE CHIROPRACTIC

**636.530.1212**  
173 LONG RD. STE 100, CHESTERFIELD, MO 63005



This section has been created to give you easier access when searching for a trusted neighborhood vendor to use. Take a minute to familiarize yourself with the businesses sponsoring your Clarkson Valley Living newsletter.

These local businesses are proud to partner with you and make this newsletter possible. Please support these businesses and thank them for supporting Clarkson Valley!

#### #ADVERTISING

Clarkson Valley Living  
Chris and Deanna Ley  
(314) 566-4022

#### ACCOUNTANT / CPA

Enterprise Accounting  
(636) 779-0019  
AccountingSTL.com

#### APPLIANCES & SERVICE

AAA Home Services  
(314) 968-0900  
AAASTL.com

#### BRICK & STONE MASONRY

Masterpiece Masonry  
(314) 954-8269  
MasterpieceMasonry.com

#### CABINET & GRANITE SPECIALISTS

Cabinets & Granite, Inc  
(314) 838-8588  
CabinetsAndGraniteInc.com

#### CARPET, WOOD, TILE & UPHOLSTERY CLEANING

Oxi Fresh Carpet Cleaning  
(314) 822-1900  
OxiFresh.com

#### CHIMNEY MAINTENANCE

English Sweep  
(636) 225-3340  
EnglishSweep.com

#### CHIROPRACTOR

Strotheide Chiropractic  
(636) 530-1212  
www.goodback.com

#### COMPUTER CARE / IT SERVICES

Katy Computer  
(636) 394-1900  
Katy.com

#### COUNSELING SERVICES

The Right Solution  
(314) 374-1620

#### CUSTOM HOMES & REMODELING

Apollo Enterprises, Inc.  
(636) 532-1158  
ApolloEnterprisesInc.com

#### Premier Design &

Construction  
(314) 640-5906  
PremierBuilds4You.com

#### DENTIST

Kehrs Mill Dental Arts  
(636) 230-7557  
KehrsMillDentalArts.com

#### Wildhorse Dental

(636) 537-0447  
WildhorseDental.com

#### EDUCATION

Sylvan Learning Centers  
(636) 537-8118  
SylvanTutors.net

#### ELECTRICIAN

AAA Home Services  
(314) 968-0900  
AAASTL.com

#### FLOORING

Ambassador Floor Company  
(636) 728-1600  
ambassadorfloor.com

#### FLOORING - CARPET, TILE, WOOD

Just Around The Corner  
Flooring  
(314) 487-9909  
JATCFloors.com

#### FURNITURE & HOME DECOR

Encore Consignment Gallery  
(636) 220-9092  
EncoreSTL.net

#### HEATING & AIR CONDITIONING

AAA Home Services  
(314) 968-0900  
AAASTL.com

#### HOME THEATER AND AUTOMATION

Elegant Home Theater  
(636) 376-4575  
ElegantHomeTheater.com

#### INSURANCE AGENT

Shelter Insurance - Steve Downs  
(636) 391-9111  
ShelterInsurance.com

#### INSURANCE-AUTO-HOME-LIFE-HEALTH-BUS.

John Lancia - Weiss Insurance  
(636) 534-7287

#### INTERIOR DESIGN

Ellie Redders Interiors  
(314) 348-3540  
EllieReddersInteriors.com

#### JEWELRY-DIAMONDS & CUSTOM DESIGN

Novak Jewelers  
(636) 227-7225  
NovakJewelers.com

#### LAWN MAINTENANCE

Dowco Enterprises  
(636) 532-9192  
DowcoInc.com

#### LEARNING CENTER

KinderCare Chesterfield  
(636) 227-5074  
KinderCare.com

#### ORTHODONTIST

Alizadeh & Schreiner  
Orthodontics  
(636) 394-5455  
alizadehortho.com

Century Orthodontics  
(636) 391-0499  
CenturyOrthodontics.com

Ries Orthodontics  
(636) 230-6100  
RiesOrtho.com

#### PAINTER

DiPasquale Painting LLC  
(314) 608-3310  
dipasqualepainting.com

#### PHOTOGRAPHY - FAMILY & SPECIAL EVENTS

Eichelberger Photography LLC  
Kim Eichelberger  
(636) 734-1486  
EichPhoto.com

#### PLUMBING

AAA Home Services  
(314) 968-0900  
AAASTL.com

#### E&M Plumbing

(636) 938-1311  
EMPlumbing.com

#### PRINTING SUPPLIES & SOLUTIONS

Cartridge World  
(636) 391-2278  
CWSTL.com

#### REALTOR

Assist-2-Sell  
(636) 391-2900  
WeSellStLouisHomes.com

Colleen Lawler & The Irvine  
Team  
(314) 852-1400  
TheIrvineTeam.com

Lottmann Realty Group - Re /  
Max Suburban  
(636) 812-4400  
MySTLRealtor.com

#### REMODELING

Banner Construction  
(314) 569-1050  
BannerConstruction.com

#### ROOFING/ SIDING / GUTTERS

Allen Roofing & Siding  
(636) 391-1117  
ARoofing.net

#### SALON & SPA

Salon Joli & Spa  
(636) 386-5654  
SalonJoliAndSpa.com

#### SENIOR PLACEMENT SERVICES

Oasis Senior Advisors  
(314) 602-9998  
Chesterfield.  
OasisSeniorAdvisors.com

#### SIGNS & GRAPHICS

Infinite Signs & Graphics  
(636) 220-1791  
Infinite-Signs.com

#### TRAVEL AGENCY

Travel Leaders  
(636) 778-1081  
TravelLeaders.com / StLouisMO

#### WATER TREATMENT

E&M Plumbing  
(636) 938-1311  
EMPlumbing.com

#### WATER / MOLD RESTORATION

Advanta Clean  
Dave Kosanke  
(314) 750-8659

#### WEALTH MANAGEMENT

Accelerated Wealth  
(314) 222-2788  
AcceleratedWealth-STL.com



# Mayor's Clarkson Valley Corner

## Happy New Year!



Mayor Scott Douglass

**Elections are the foundation of a Republic Democracy. And most of us (wish I could say all of us) look forward to casting our ballot. However, after this last round, meaning no disrespect, I was glad it was over. Lots of surprises – at least from a media/forecaster prospective. It seems clear that changes in the direction for the good ol' US of**

**A and the State of Missouri are imminent. We read a lot about people resisting change. But the reality is change is the only constant in human endeavors. So, how are you doing with those changes you promised yourself, "New Year's resolutions"?**

With each New Year comes new challenges and some old ones that remain challenging – thus, requiring a new or different approach. Most of us, I think, do look at the New Year with ideas and/or a plan for enriching the lives of family and friends. These promises to ourselves about things we are going to do better or finally get done can be called resolutions. Some resolutions are just a fun exercise for the family.

However, resolutions like: lose weight, get more exercise, plan and eat more nutritious meals, can improve one's health. And planning activities with family members can be a New Year's resolution making life more meaningful. If we do make these resolutions, why do they not last to completion? It's called commitment, isn't it?

Well, let me ask that you consider a 2017 resolution (a commitment) ... more recycling. Evidence is that most of us recycle; however, recent months indicate a drop off in the amount. So how about a renewal or a new start? Recycling addresses the problem of no more room for landfills and it saves the City (you) money.

### Look at what goes into the recycle bin:

- Aluminum cans, trays & foil (trays & foil must be cleaned)
- Aseptic packaging & gable top containers (milk & juice cartons)
- Steel cans and tins
- PET soda, water & flavored beverage bottles (#1 clear and green plastic resin)

- HDPE milk & juice jugs (#2 clear plastic resin)
- HDPE detergent & fabric softener containers (32 colored plastic resin)
- PVC narrow neck containers only (#3 plastic resin), such as health and beauty aid products, household cleaners
- LDPE grocery containers (#4 plastic resin); such as margarine tubs, frozen desert cups, six and twelve pack rings
- PP grocery containers (#5 plastic resin), such as yogurt cups and narrow neck syrup and ketchup bottles
- #7 plastic resin, narrow neck containers only
- Plastic buckets, such as kitty litter containers (5-gallon size maximum)
- Glass bottles and jars (clear, brown and green): no window glass, dinnerware or ceramics
- Newspaper, including inserts (remove plastic sleeves)
- Cardboard (no waxed cardboard)
- Kraft (brown paper) bags
- Magazines, catalogs and telephone books
- Office, computer, notebook & gift-wrap paper (no metal clips, spirals, binders)
- Chipboard (cereal, cake & food mix boxes, gift boxes, etc.)
- Carrier stock (soda & beer can carrying cases)
- Junk mail & envelopes (no plastic cards, stick on labels or unused stamps)
- Paperback books (no hard cover books)

### Notes:

- No motor oil, insecticide, herbicide or hazardous chemical containers
- Plastic bags should be returned to grocery or department stores
- No plastic film (no plastic sheets, tarps or wrap)
- No expanded foam (styrofoam) or clear polystyrene per US Environmental Protection Agency

It just makes good environmental and economic sense. How about adding another New Year's resolution. It's not too late – RECYCLE.

### Happy Recycling!



**Clarkson Valley  
Recycling  
Results through  
November 2016**  
November recycling tonnage: 14.3  
YTD tonnage: 256.69

FROM US TO YOU

# Happy New Year!

**We would like to wish you and yours a happy 2017! We've enjoyed putting together this "Looking Back at 2016" issue for you. While we could not place all the pictures and events, we want you to know that it has been our pleasure to bring this publication to you month after month.**

As we reflect back on 2016, we have met so many wonderful people through this publication. Thank you to those of you who have taken the time to share your stories and pictures this year. It is amazing to learn about your travels, your pets, your businesses, your giving back and your kiddos. It's because of you that *Clarkson Valley Living* is so amazing!

We truly are blessed to have been a part of your lives in 2016. It has been a labor of love for us, and we wish for the

very best for all the residents of Clarkson Valley for many, many years to come!

This publication would not be possible without our wonderful *Clarkson Valley Living* Business Partners. To each of you, we say thanks and cannot wait to tell your stories, as well! We hope that you enjoy being a part of this community, and we know that the wonderful residents truly appreciate you supporting their publication.



*Chris and Deanna*  
**CO-PUBLISHERS**  
**314.566.4022 | 314.566.7566**  
**Chris.Ley@N2Pub.com**  
**Deanna.Ley@N2Pub.com**

## Your Clarkson Valley Living Team



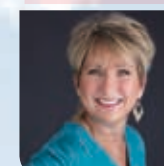
**Chris Ley**  
314-566-4022  
Chris.Ley@n2pub.com  
www.N2pub.com



**Deanna Ley**  
314-566-7566  
Deanna.Ley@N2pub.com  
www.n2pub.com



**Katie Connelly**  
630-292-8247  
Katie.Connelly@n2pub.com



**Kristy Howard**  
Clarkson Valley resident  
636-248-4538  
Kristy.Howard@n2pub.com



**Kim Eichelberger**  
Eichelberger Photography, LLC  
636-734-1486  
KevinAndKim@Eichphoto.com  
Eichphoto.com



Delicious Dish Contributor  
**Valerie Denton**  
314-660-3966  
Gavadenton@sbcglobal.net

PHOTOGRAPHER

RESIDENT ARTICLE CONTRIBUTOR

PUBLISHERS

PUBLISHING ASSISTANT

CONTENT MANAGER

### WANT TO JOIN THE TEAM?

We are always looking for volunteers who want to be a part of making *Clarkson Valley Living* the best it can be for the community. We are looking for Resident Article Contributors and Junior Writers (kids who want to get involved!) to join the team. Email **Deanna.Ley@N2Pub.com** for more info!

publishing™

helping hands

# Help Support Clarkson Valley's YOUNG ENTREPRENEURS!

Please reach out to the following Clarkson Valley teens if you are in need of a Helping Hand. If you have an entrepreneurial teenager who would like to be featured, please contact Clarkson Valley resident Carol Rosa at [rosafab5@sbcglobal.net](mailto:rosafab5@sbcglobal.net) with their (or your) contact info, age/grade and services offered.

**Leah Forst** - 15 yrs old, Sophomore

**Service:** Babysitter

**Phone:** 314.614.0034

**Email:** [rforst@rachelsgrove.com](mailto:rforst@rachelsgrove.com)

(mom, Rachel)

**Cathryn Rosa** -15 yrs old, Sophomore

**Services:** Babysitter, Dog Walker

**Phone:** 860-389-7220 (mom Carol)

**Email:** [rosafab5@sbcglobal.net](mailto:rosafab5@sbcglobal.net) (mom, Carol)



Lottmann  
REALTY GROUP

Jeff Lottmann

RE/MAX Suburban

ph: (314) 406-8911

[JLottmann@REMAXstl.com](mailto:JLottmann@REMAXstl.com)

[www.mystlrealtor.com](http://www.mystlrealtor.com)



*"From my home to yours, I take great pride in helping out my fellow Clarkson Valley neighbors with all of their real estate needs."*

**- Jeff Lottmann, Forest Hills Resident & Realtor**



AAA  
Appliance  
Heating & Cooling  
Plumbing • Electrical  
Home Services  
**\$20 OFF**  
ANY IN-HOME REPAIR  
CALL FOR DETAILS  
\*Mention this coupon when booking appointment.

## FOR ALL YOUR HOME SERVICE NEEDS

Same-Day  
Service

AAA  
Appliance  
Heating & Cooling  
Plumbing • Electrical  
Home Services

Over 45 Years of Top Services



Jeff and Barb Probst, Owners

### 2 Locations to Serve You!

**St. Charles**

7428 Mexico Road

St. Peters, MO 63376

Phone: 636-928-4933

**St. Louis County**

9040 Manchester Road

St. Louis, MO 63144

Phone: 314-968-0900

#### BUSINESS HOURS:

Monday-Friday, 7 a.m.-6 p.m.

Saturday, 8 a.m.-2 p.m.

APPLIANCES | HVAC SERVICES  
PLUMBING | ELECTRICAL | PARTS CENTER

100%  
Satisfaction  
Guaranteed

[www.AAASTL.com](http://www.AAASTL.com)

- LICENSED, BONDED AND INSURED • INSTALLATION SPECIALIST FOR ANY NAME BRAND NO MATTER WHERE YOU PURCHASED IT
- AUTHORIZED SERVICE FOR MOST BRAND NAMES (MAKES AND MODELS) • FULL WARRANTIES ON MOST PRODUCT PURCHASE

Proudly Selling Our Clarkson Valley Community Each and Every Day

# News You Can Use

Want To Be The First To Know?  
Get Connected Here!

## CVL Needs You! Get Involved!

Join our private *Clarkson Valley Living* Facebook group! "Friend" us so we can notify you about our community news and events.  
[www.Facebook.com/groups/ClarksonValleyLiving](http://www.Facebook.com/groups/ClarksonValleyLiving)

### YOU'RE INVITED to a NEIGHBOR NIGHT OUT WINE TASTING EVENT!

Join us on January 26th from 5:30-8:00pm at Accelerated Wealth's office for a fun night out of wine tasting and hors d'oeuvres. Please RSVP to Deanna at [Deanna.Ley@N2Pub.com](mailto:Deanna.Ley@N2Pub.com) by 1/22.

### Are You On The Clarkson Valley Living Email List?

Shoot a quick email to [Deanna.Ley@N2Pub.com](mailto:Deanna.Ley@N2Pub.com) to be added so you can be in-the-know for all things CVL and event invites.

### WE WANT TO CELEBRATE With You!

CVL would love to help you celebrate the birth of a child, a birthday, a marriage, a retirement and any other special occasion. Simply email Deanna at [Deanna.Ley@N2Pub.com](mailto:Deanna.Ley@N2Pub.com) some pics of the event and a brief write up, and we will publish it in an upcoming issue of *Clarkson Valley Living*.



Happy New Year

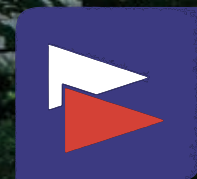
### Have You Used a Clarkson Valley Living Business Partner?

CVL is sponsored by some amazing local businesses. Chris and I work hard to make sure that we are partnering with the best possible businesses to meet all of your needs. If you have used one of the CVL business partners, please reach out to me and let me know about your experience. Also, if you know of any great local businesses, let me know that, too, and I will send you a little gift for the referral!

~Deanna  
([Deanna.Ley@N2Pub.com](mailto:Deanna.Ley@N2Pub.com))

# Have a Banner Day

WE WOULD LOVE TO ASSIST YOU WITH YOUR HOME RESTORATION PROJECT



## BANNER CONSTRUCTION



JamesHardie

BEECHWORTH WINDOWS

[bannerconstruction.com](http://bannerconstruction.com) | 1177 North Price Road | 314-569-1050 | Call today for a FREE consultation

A FREE SERVICE FOR SENIORS AND FAMILIES

oasis SENIOR ADVISORS



### Finding the Right Place Just Got Easier

Oasis understands that changing homes – at any stage in life – is difficult. For seniors, this process is further complicated by the never-ending choices and costs associated with assisted living options. WE CAN HELP!

#### Eileen, your personal advisor & a Clarkson Valley resident, will:

- Meet with you, face-to-face, to carefully assess your specific needs.
- Create your unique profile in our proprietary OasisIQ™ software.
- Present to you a refined list of senior assisted living communities.
- Schedule tours and accompany you on visits.



Call 314.602.9998  
EILEEN LAMBERT, CSA  
[Chesterfield.OasisSeniorAdvisors.com](mailto:Chesterfield.OasisSeniorAdvisors.com)  
[ELambert@YourOasisAdvisor.com](mailto:ELambert@YourOasisAdvisor.com)

# Novak Jewellers

14442 Clayton Road Ballwin, MO 63011

(636) 227-7225

EST. 1986 [novakjewellers.com](http://novakjewellers.com)



# We Met Some *Amazing* Clarkson Valley Families In 2016

meet your neighbors

Photos courtesy of **Cyndi Palmer** of Cyndi Palmer Photography and **Kim Eichelberger** of Eichelberger Photography & Article sponsored by **Kehrs Mill Dental Arts**

One of the best parts of *Clarkson Valley Living* is getting to know all about your neighbors! Thanks to all of the families who took the time to share their stories with us and to provide such great covers this past year, and thanks to all of you who got to know your neighbors better by reading this article.

We'd also like to thank our former photographer **Cyndi Palmer** and our current photographer **Kim Eichelberger** of **Eichelberger Photography** for taking such beautiful photos of our CVL families, as well as the business partner who sponsors this article each and every month -- **Kehrs Mill Dental Arts**, which is owned by **Clarkson Valley resident Dr. Harry Stadnyk**.



Get to know your neighbors better by having your family featured in the next available issue and receive a free photo shoot & 16x20 print from photographer, **Kim Eichelberger** of **Eichelberger Photography**. Contact **Kristy** at [Kristy.Howard@N2Pub.com](mailto:Kristy.Howard@N2Pub.com).



From teething through dentures and everything in between, including TMJ procedures, snoring therapy, and more... See **Dr. Harry Stadnyk** at **KEHRS MILL DENTAL ARTS**

Using advanced dental technology, we provide for the dental needs of the entire family. We also offer the latest in cosmetic procedures, such as teeth whitening, porcelain veneers and implant restorations.

**KEHRS MILL DENTAL ARTS**  
HARRY STADNYK, DDS



Dr. Harry Stadnyk, DDS

Call our office at **636-230-7557** to schedule an appointment with **Dr. Stadnyk**, or visit us at [kehrsmilldentalarts.com](http://kehrsmilldentalarts.com) to learn more.

Our office is located just south of Clayton & Kehrs Mill in Ballwin.







Assist-2-Sell Customers Have Saved Over **\$1 BILLION** in Commissions\*



We are a **Traditional Full Service Company** that Saves you Commission...

- ◆ Advertise your home on 84 internet sites including MLS, Realtor.com, Zillow & Trulia
- ◆ Guide sellers throughout the entire home sale process



Connie & Jason Lieber  
Brokers/Owners



209 Cordovan Commons  
**Seller Saved \$4743\*\***



46 Burgundy  
**Seller Saved \$4980\*\***



11742 Long Leaf  
**Seller Saved \$3825\*\***



1432 Sycamore Manor  
**\$350,000**

Testimonial:

"Thank you for all the hard work you put in the Morel listing! It was above and beyond my expectations." Chris M.



**Experience You Can Trust!**

(636)532-0228 [WeSellStLouisHomes.com](http://WeSellStLouisHomes.com)



\*Savings based on statistics since Jan. 1, 2000 for all Assist-2-Sell offices in North America. Commissions may be negotiable and are not fixed by law. \*\*Savings are based on a comparison to paying a 6% commission. 6% used for comparison purposes only. Each office independently owned and operated.

## Clarkson Valley Residents *Shared Their Passions in 2016*

**resident spotlight**

Article sponsored by Allen Roofing & Siding

Clarkson Valley is full of residents who have stories, hobbies, collections, and talents that are so interesting that we just had to spotlight them! We had a great time these past few months showing off these fantastic residents and their passions.

We'd also like to thank the business partner who sponsors this article each and every month -- **Allen Roofing & Siding**, which is owned by Clarkson Valley residents Lee and Tracy Allen.



Do you have a fun or interesting hobby, collection or talent? If so, please contact Chris at [Chris.Ley@N2Pub.com](mailto:Chris.Ley@N2Pub.com) to set up a time to share your passion.



We Will Do Your Winter Homework...  
Roofing... Siding... Gutters and More!

*Doin' your homework!*

**Allen Roofing & Siding**

Lee Allen CONTRACTING G&W Roofing  
A Division of Allen Roofing & Siding

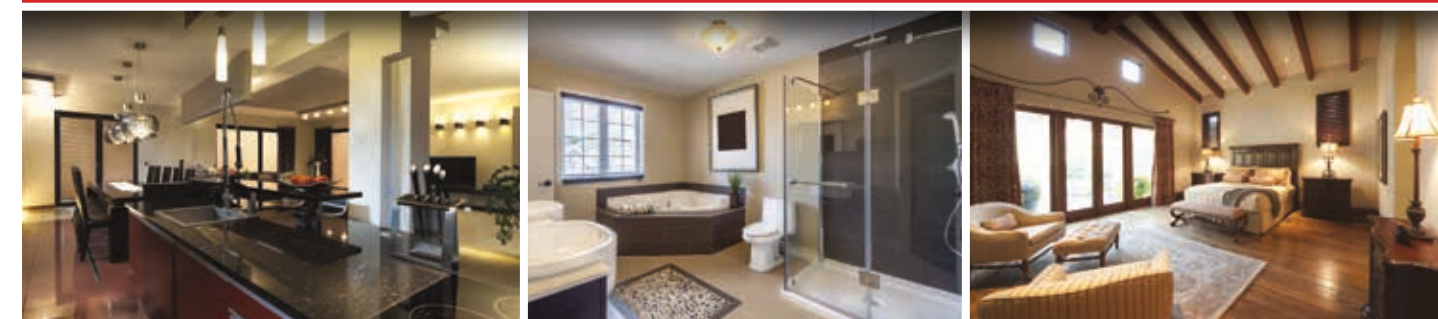
525 Old State Rd. Elnsville, MO 63021 636 391-1117  
90 Boone Hills Dr. Saint Peters, MO 63376 636 926-2015  
8020 N. Minois St. Caseyville, IL 62232 618 343-1117

[contactus@arofing.net](mailto:contactus@arofing.net) [www.arofing.net](http://www.arofing.net)



**314-640-5906**  
[www.premierbuilds4you.com](http://www.premierbuilds4you.com)

**PREMIER DESIGN & CONSTRUCTION** YOU DESIGN IT. WE BUILD IT.  
design | additions | remodeling | kitchens | baths | basements | custom cabinetry & bookcases



# Coffee Break



		82	20	114
		35		91
2	49		0	94
				117
88	136	138	54	143

## Fill in the missing numbers!

Missing numbers are integers between 0 & 50. Numbers in each row add up to totals to the right. Numbers in each column add up to the totals along the bottom. Diagonal lines also add up to the totals to the right.

### New Year's cultural trivia:

Every January we traditionally ring in the new year with fanfare, parties and resolutions. However, many cultures and religions throughout time have celebrated the new year in different ways and at various times during the year.

- The celebration of the new year as we know it on January 1 takes place under the Gregorian calendar.
- The Chinese New Year is based on the lunar calendar and is often celebrated with parades and fireworks.
- During the Middle Ages people used a Julian calendar and thus celebrated the new year on March 25th, also known as Annunciation Day.
- Ancient Persians gave New Year's gifts of eggs, which symbolized productiveness.
- The Jewish New Year is called Rosh Hashanah (Hebrew for "beginning of the year"). It is celebrated on the first and second days of the Jewish month of Tishri, which falls either in September or October.



## Comfort Food!

Spot the difference!

There are 9 differences between these photos.

Can you spot them?

Answers elsewhere in this issue

## 2016's Resident BUSINESS BEAT

We have some absolutely amazing business owners who call Clarkson Valley home, and a lot of them partner with us in your *Clarkson Valley Living* to help sponsor this publication. Please visit the Resident Business Guide (RBG) in the back of each issue should you need a good, product or service from your fellow neighborhood business owner. If you own a business and live in Clarkson Valley, please reach out to Chris at [Chris.Ley@N2Pub.com](mailto:Chris.Ley@N2Pub.com) to be featured in your own Business Beat article and in the RBG.

We'd also like to thank the business partner who sponsors this article each and every month -- Clarkson Valley resident John Lancia with Weiss Insurance

**WEISS**  
INSURANCE

Auto • Home • Business • Life • Health



683 Trade Center Blvd, Suite 100 | Chesterfield, MO 63005  
**John Lancia**,  
Independent Agent and Clarkson Valley Resident  
(636) 534-7287 • [johnlancia@weiss-ins.com](mailto:johnlancia@weiss-ins.com)

YOUR INSURANCE SOLUTION

One Thing Is For Sure...  
**CLARKSON VALLEY HOMES**  
 ARE ABSOLUTELY GORGEOUS!

**living spaces**

Article sponsored by DiPasquale Painting

Thanks to each of you who opened up your home to your fellow neighbors through this Living Spaces article in 2016. The pride of ownership Clarkson Valley residents have for their homes is so evident, and it's one of the many reasons why Clarkson Valley is the best place to live!

We'd also like to thank **Kim Eichelberger of Eichelberger Photography** for taking most of the beautiful photos of our Living Spaces homes, as well as the business partner who sponsors this article each and every month -- **DiPasquale Painting, owned by David DiPasquale.**



We have featured some great homes in Clarkson Valley & would love to share yours, as well. Have you recently remodeled, redecorated or built on an addition? Have you created a man cave or built a new wine cellar? Contact Kristy at [Kristy.Howard@N2Pub.com](mailto:Kristy.Howard@N2Pub.com).



Clarkson Valley's Trusted  
 Painter for Over 20 years

Interior & Exterior Painting  
 Residential & Commercial  
 Drywall Repair  
 Deck Staining  
 Carpentry  
 Wallpaper Removal

**10% Off**  
 All New  
 Proposals  
 (mention this ad)

Call 636-536-3056  
[DiPasqualePainting.com](http://DiPasqualePainting.com)



**Did you know age seven is the perfect age for your child's first orthodontic exam?**



**NO REFERRAL IS NECESSARY FOR A COMPLIMENTARY EXAM AT OUR OFFICE!**



2997 Clarkson Road Suite 200  
 Chesterfield, MO 63017  
 (636) 394-5455

Call for your complimentary consultation today!

[www.AlizadehOrtho.com](http://www.AlizadehOrtho.com)



ELEGANT  
*Home Theatre*  
SYSTEMS  
636.677.9855  
www.eleganthometheatersystems.com

PRIVATE CINEMAS  
MEDIA ROOMS  
THEATER ROOMS  
THEATER SEATING  
ARCHITECTURAL ACOUSTICS  
CUSTOM MURALS  
WHOLE HOUSE AUDIO

**FREE CONSULTATIONS!**



CUSTOM ELECTRONIC DESIGN & INSTALLATION ASSOCIATION



**M MODERN**  
HOME TECHNOLOGIES, LLC  
636.677.3455 | WWW.MODERNHOMETECH.NET  
(SISTER COMPANY OF ELEGANT HOME THEATER)

Modern Home Technologies, LLC can install peace of mind with **Ring™ Video Doorbell!**

Over 1 million burglaries occur just in the United States each year during daytime hours, when homes are usually unoccupied. Being home is often enough to deter a potential burglar.

Whereas traditional security systems activate once a break-in has occurred, the Ring™ Video Doorbell is designed to help you prevent a break-in from taking place at all. Answer the door from anywhere using your wireless video doorbell. With Ring, you're always home.

**\$399 INSTALLED\***

\*operation requires good wireless internet connectivity at front door

Call the experts at Modern Home Technologies, LLC to come and install your Ring™ Video Doorbell.

**IT IS QUICK, EASY AND AFFORDABLE.**  
**636.677.3455**

ring VIDEO DOORBELL PRODUCT FEATURES

**WI-FI CONNECTED**

Simply connect the Video Doorbell to your Wi-Fi network and it's ready to go.

**EASY INSTALLATION**

Installs in minutes

**HD CAMERA**

Always have a clear view of your home's entrance with wide-angle HD video.

**NIGHT VISION**

See what's going on any time of day, thanks to infrared LEDs.

**FACEPLATE FINISHES**

- Satin Nickel
- Venetian Bronze
- Antique Brass
- Polished Brass

**MOBILE ACCESS**

Receive instant alerts when someone rings your doorbell or motion is detected. Use the free Ring™ app (iOS® and Android™). See and speak with visitors from anywhere using your smartphone, and watch recorded footage anytime with Cloud Recording.

**CLOUD RECORDING**

Never miss any activity with optional Cloud Recording.



**TWO-WAY TALK**

Seamlessly speak with anyone at your door via the built-in speakers and microphone.

**MOTION DETECTION**

Motion sensors activate the camera and trigger instant mobile alerts when movement is detected.

**DUAL POWER**

Connect to an existing doorbell wiring, or run off the built-in battery for total convenience.

**CERTIFIED FOR OUTDOOR USAGE**

Never worry about your unit being damaged by heat, humidity, rain, dust, or snow.

**LIFETIME PURCHASE PROTECTION**

If your Video Doorbell is stolen, we'll replace it free of charge.



**From Imagination To Installation!**

We carry the best granite countertops, kitchen cabinets, bathroom vanities and accessories in the St. Louis, MO area with quality installation guaranteed.  
**Call Us Today! 636-527-8850**



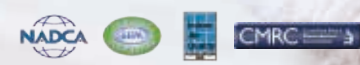
Mention this ad and receive an additional 5% off. (not valid with other coupons)

Visit us today at our Ballwin location:  
14173 Manchester Rd. Ballwin, MO 63011  
M W F: 9AM - 7PM | T H: 9AM - 5PM | SAT: 9AM - 3PM  
www.cabinetsandgraniteinc.com

Ensure healthy home air quality for your most precious gifts this holiday season.

- MOISTURE CONTROL SOLUTIONS
- WATER DAMAGE & RESTORATION
- MOLD TESTING & REMOVAL
- DUCT CLEANING

**BREATHE EASY.**  
CALL NOW FOR A FREE INSPECTION & ESTIMATE  
314.256.9908



**INSERT YOURSELF HERE**



WE'LL GET YOU THERE BEFORE SOMEONE STEALS YOUR CHAIR.

**TRAVEL LEADERS®**

Call us to book your winter getaway.  
**636.778.1081**

17281 Chesterfield Airport Road (Off Boone's Crossing Near Starbucks)  
www.TravelLeaders.com/StLouisMO



# Delicious Dishes

## OF 2016

Article sponsored by  
Just Around the Corner Flooring



### Can You Say Yum?!

So many great Clarkson Valley recipes were featured this past year! We want to thank Forest Hills resident Valerie Denton for being our Delicious Dish Article Contributor. She worked hard to find fantastic recipes to share each month. Hopefully, you made them all!

We'd also like to thank the business partner who sponsors this article each and every month - Just Around The Corner Flooring, which is owned by Rich Olson.



Would you like to have a favorite family recipe featured in Clarkson Valley Living? Simply email Deanna at [Deanna.Ley@N2Pub.com](mailto:Deanna.Ley@N2Pub.com) to have your recipe featured in the next available issue.



**JUST AROUND THE CORNER FLOORING**

**50% OFF**  
Glazed Porcelain Ceramic Tile  
(reg. \$2.99/sq ft. labor additional)

Store Hours: Mon-Fri: 8AM till 4PM | Saturday: 10AM till 3PM | Sunday: Closed



**50% OFF**  
Select 3/4" x 4" Unfinished Brazilian Cherry Hardwood  
(reg. \$7.99/sq ft. labor additional)

314.487.9909 | [www.jatcwoodfloors.com](http://www.jatcwoodfloors.com) 



 **Computer Service & Repair**

Putting computers to work for people...Since 1988  
(636) 238-1061 | 347 Clarkson Rd | Ellisville, MO 63011

Hate Windows 8?  
Get your Start Menu Back

Virus Removal

Memory Upgrades

In-Home Wireless Networking

Find us online at [www.Katy.com](http://www.Katy.com) or on the Southeast corner of Clayton & Clarkson Rd

US40 / I-64	
Clarkson Rd	141
Clayton Rd	
<b>Katy</b>	
Manchester Rd	

**Sylvan Learning**

Achieve Academic Success in your own Backyard!

Get Started Today with a Free Assessment!

- Reading
- Math
- Study Skills
- ACT/SAT Prep
- Math EDGE
- Reading EDGE
- STEM
- And Much More!

Ballwin: 636-394-3104 | [Ballwin@sylvantutors.net](mailto:Ballwin@sylvantutors.net)

Chesterfield: 636-537-8118 | [Chesterfield@sylvantutors.net](mailto:Chesterfield@sylvantutors.net)

[SYLVANTUTORS.NET](http://SYLVANTUTORS.NET)




# Your **PRECIOUS PETS**

*Were The Superstars Of  
The Neighborhood In 2016*

**precious pets**  
Article Sponsored by Oxi Fresh Carpet Cleaning

It was so much fun hearing all the tales from the Clarkson Valley's four-legged family members! There's nothing better than reading their stories in their own "words" and learning why they love living in Clarkson Valley so much. It really is the perfect neighborhood for humans *and* for pets!

**We'd also like to thank the business partner who sponsors this article each and every month -- Oxi Fresh Carpet Cleaning, which is owned by Charles Keyser.**

 **Do you have a pet and would like to share his/her story?** Dogs, cats, horses, fish, and any other types of animals are welcome! Email Kristy Howard at [Kristy.Howard@N2Pub.com](mailto:Kristy.Howard@N2Pub.com) to have them featured in an upcoming issue.



**314-822-1900**  
[www.oxifresh.com](http://www.oxifresh.com)

- ✓ Pet Odor & Stain Removal Experts
- ✓ Safe for Children & Pets
- ✓ Fast One Hour Dry Time



**THE WORLD'S GREENEST CARPET CLEANER**



Online Scheduling Available!



SELECTION • SERVICE • SAVINGS

Call Ambassador today or stop by our showroom to see how the finest flooring products combined with the most highly trained installers in the business can transform your home or commercial project from ordinary to extraordinary.

*Experience Ambassador.  
You'll be glad you did.*

[www.ambassadorfloor.com](http://www.ambassadorfloor.com)



17770 Chesterfield Airport Rd.  
Chesterfield, MO 63005  
636.728.1600



# Clarkson Valley's Youth Shared Their Outstanding Stories Of Achievement In 2016



## young achievers

Article Sponsored by KinderCare Chesterfield

Thanks to all of the Young Achievers who shared their awesome stories with us last year. How you have excelled is both motivating and inspiring! We can't wait to read more Achiever stories in 2017!

We'd also like to thank the business partner who sponsors this article each and every month -- **KinderCare Chesterfield, which is run by Chelsea Owens, the Center Director.**



If you know of an outstanding youth (or you are one yourself!) who has had an accomplishment of some sort that should be featured, please email Kristy at [Kristy](mailto:Kristy.Howard@N2Pub.com). [Howard@N2Pub.com](mailto:Howard@N2Pub.com).

A PLACE FOR KIDS TO GROW

We give your child the tools to become confident and self-aware.

In a caring and stimulating atmosphere, our passionate and engaging teachers give your child endless opportunities to grow, learn, and imagine--whether building a spaceship to blast off to Mars or inviting a new friend to share a story during group time.

Our program is curriculum-based with exciting field trips, learning opportunities, and a school year filled with fun!


Call today to schedule a tour. We can't wait to meet you!



**KinderCare**  
LEARNING CENTERS  
Chelsea Owens - Center Director  
636.227.5074 | 2275 Village Green Parkway | Chesterfield, MO 63011



**MASTERPIECE MASONRY**



Best of houzz 2016 SERVICE

BBB ACCREDITED BUSINESS A+

Timeless Stone and Brick Masonry  
MASTERPIECEMASONRY.COM

314.954.8269

# Thanks For Sharing Your *Amazing Outdoor Spaces* WITH US IN 2016!

## outdoor oasis

Article sponsored by Dowco Enterprises, Inc.

Wow -- there are so many beautiful outdoor spaces that were featured this past year! Thanks so much for inviting us all to enjoy your relaxing Outdoor Oasis!

**We'd also like to thank Kim Eichelberger of Eichelberger Photography for taking most of the beautiful photos of our Outdoor Oasis spaces, as well as the business partner who sponsors this article each and every month -- Dowco Enterprises, Inc, owned and run by Maurice and Kelly Dowell.**



Do you have an amazing outdoor oasis, or do you know someone in your neighborhood that does? Share your outdoor space or nominate a neighbor's yard for spotlighting by emailing Kristy at [Kristy.Howard@N2Pub.com](mailto:Kristy.Howard@N2Pub.com).

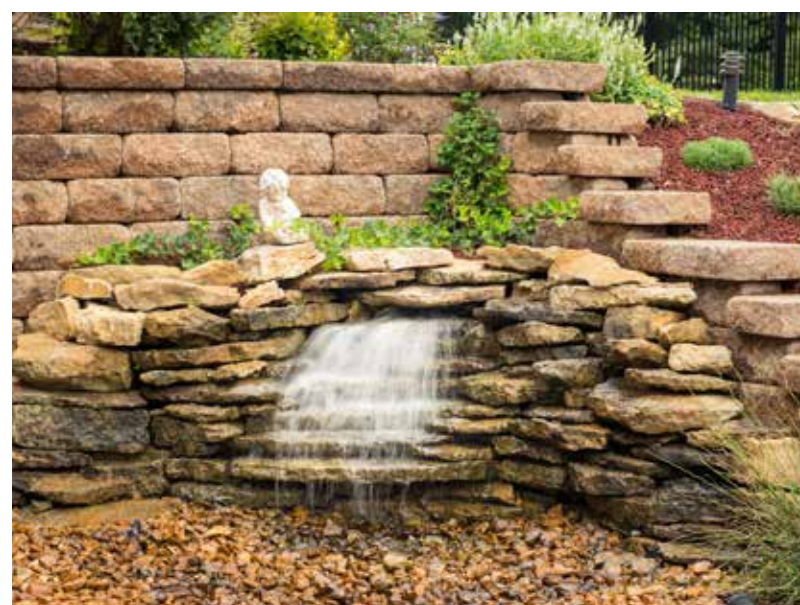


**Dc.**  
**SNOW REMOVAL &  
ICE CONTROL**

When the snow falls, Dowco is the premier choice for residential snow removal service in West County.

Limited Route Availability. Book Early.

[WWW.DOWCOINC.COM](http://WWW.DOWCOINC.COM)







*"It is such a pleasure to develop enduring relationships with our patients and their families, and I look forward to creating confident, beautiful, and lasting smiles for each one of them. I am especially pleased that I can practice in my hometown and that my family can be part of this wonderful community."*

- Dr. Charlie Ries

YOUR CLARKSON VALLEY ORTHODONTIST

333 Ozark Trail, Dr. # 100 • Ellisville, MO 63011  
 (636) 230-6100  
 www.RiesOrtho.com

Conveniently located between the Daniel Boone library and Crestview Middle School

## Clarkson Valley's ATHLETES INSPIRED US ALL IN 2016!

amazing athlete Article Sponsored by Ries Orthodontics

We were all wowed by 2016's Amazing Athletes! From playing hockey or soccer to being an equestrian or a golfer (and all sports in between), one thing is for sure... Clarkson Valley has a lot of dedicated athletes who possess awe-inspiring athletic talents!

We'd also like to thank the business partner who sponsors this article each and every month -- Ries Orthodontic, which is owned by Clarkson Valley residents Dr. Charlie and Molly Ries.

Call athletes of all ages! Do you play a sport you are passionate about? Whether it's football, cheerleading, skateboarding, skiing, soccer or any sport in between, we want your story! Just email Kristy at [Kristy.Howard@N2Pub.com](mailto:Kristy.Howard@N2Pub.com) to be featured.

**SAVE \$25**  
OFF YOUR NEXT \$100 ORDER\*

UP TO 30% SAVINGS | 100% GUARANTEE | FREE DELIVERY\*

Cartridge World

Highway 40  
Expo Home Center  
Manchester Rd  
St. Louis  
14248 Manchester Road  
Manchester, MO 63011  
(636) 391-2278

ALU: 25off100  
4006910244080

\*Good on any Cartridge World brand products. Limit one per customer, household or business. Valid at participating stores. Not valid with any other offer.  
 \*See store for details. All trademarks are used for descriptive purposes only. The names of other companies, products, brands or model numbers may be trademarks of their respective owners. Cartridge World makes no claims of sponsorship, affiliation or endorsement. © 2013 Cartridge World North America LLC. All rights reserved. Cartridge World is a registered trademark of North American LLC.

# Clarkson Valley Kids Stole The Spotlight In 2016

**kids will be kids**

So many superstar kiddos shared their stories this year! It was great to learn about the young, friendly faces that live in the neighborhood.



## We Are Thankful For All Of Our CLARKSON VALLEY LIVING'S BUSINESS PARTNERS!

**sponsor spotlight**

*Here are a few that were featured in 2016.*

A great big thanks to all our *Clarkson Valley Living* business partners who make this publication possible. We ask that you please give them a chance to work with you for all your projects and household needs. If you do use one of the publication's Sponsors, please let us know so we can add them to the SPOTTED! section.



If you have worked with (or own) a company that you feel would be a great business partner for your *Clarkson Valley Living*, please email Chris at [Chris.Ley@N2Pub.com](mailto:Chris.Ley@N2Pub.com).



E & M Plumbing



Encore Consignment Gallery



Cartridge World



DiPasquale Painting



Rottmann Realty Group



Banner Construction



Salon Joli & Spa

# Clarkson Valley Living Events Were The Place To Be



## *Fun Events Helped Bring The Community Closer Together in 2016*

Thank you to all who took part in our fantastic events in 2016! It was great to see friendships blossoming and deepening because of them.

**We'd also like to thank the restaurants, residents and business partners who hosted our events, as well as the business partners who sponsored some of our events by donating food, drinks, door prizes, etc. for them. Our business partners rock!**



Do you know of a great place to have a Clarkson Valley Living event? A restaurant, a family fun place, or your favorite hangout? If so, email Deanna at [Deanna.Ley@N2Pub.com](mailto:Deanna.Ley@N2Pub.com).





# Coffee Break Solutions

144

32	40	22	20	114
14	38	35	4	91
2	49	43	0	94
40	9	38	30	117
88	136	138	54	143



*eRi*  
ellie REDDERS interiors

*Specializing in Unique, Classic Interiors*

*Fabulous interior design service at an hourly rate. Choice in flooring, paint, window treatments, furniture, and lighting. Connections with reputable contractors & product sources. Will definitely use Ellie on next home project.*  
-Joan. G

ellie REDDERS interiors  
ellie@elliereddersinteriors.com | 314-349-3540  
www.elliereddersinteriors.com

**Wishing You a Healthy Holiday Season!**

**The Right Solution Counseling Services**

Individual & Family Counseling Services  
Most insurance plans accepted

**314-374-1620**

97 Hilltop Village Center • Eureka, MO 63025

[www.rightsolutioncounseling.com](http://www.rightsolutioncounseling.com)

*Happy New Year!*

**ENTERPRISE ACCOUNTING**

Business Solutions for Entrepreneurs

Robert & Leslie Kluge and Enterprise Staff

**www.AccountingSTL.com**  
240 Sovereign Court • Ballwin, MO 63011  
(636) 779-0019 • lockbox@accountingstl.com

**OUR PROFESSIONAL SERVICES INCLUDE:**

Tax Management Services • Financial and Retirement Planning • Estate and Trust Planning and Tax Preparation  
Entity Selection and Restructuring • Accounting Services • Mergers, Acquisitions, & Sales

**HAPPY NEW YEAR!**

Start your new year with a new insurance plan for you and your family. Your Shelter Insurance® agent can help you get organized for a fresh start! Call today!

**SHELTER INSURANCE**

AUTO • HOME • LIFE

**STEVE DOWNS**

142 Enchanted Parkway  
Manchester, MO 63021

sdowns@shelterinsurance.com

**(636) 391-9111**

We're your Shield. We're your Shelter. | ShelterInsurance.com

# Custom Wall Art - Express Yourself!



HP WallArt from Infinite Sign and Graphics allows you to create a one-of-a-kind customized wall decoration

**Whether it is your office or your home, make it uniquely YOU with Custom Wall Art and graphics**

CALL US TODAY AND WE CAN SHOW YOU HOW YOUR VISION CAN COME TO LIFE

**INFINITE** *The Possibilities are Infinite!*  
SIGN & GRAPHICS

(636) 220-1791 • Infinite-Signs.com • 460 Sovereign Court • Ballwin, MO 63011



## CLARKSON VALLEY *Living*

### Resident Business Guide

**Attention Clarkson Valley Residents:** Do you own or run a business? To have your business featured in the resident business guide in an upcoming issue of *Clarkson Valley Living*, please send an email to [Chris.Ley@N2Pub.com](mailto:Chris.Ley@N2Pub.com). This is open to the residents of Clarkson Valley only.

#### MASTERPIECE MASONRY

BRICK & STONE MASONRY

##### Masterpiece Masonry

Jonathan Naddaf - (314) 954-8269

[MasterpieceMasonry.com](http://MasterpieceMasonry.com)



##### Katy Computer

John Schmerold - (636) 394-1900

[Katy.com](http://Katy.com)



##### Kehrs Mill Dental Arts

Dr. Harry Stadnyk - (636) 230-7557

[KehrsMillDentalArts.com](http://KehrsMillDentalArts.com)



##### Weiss Insurance

John Lancia - (636) 534-7287



##### Ries Orthodontics

Dr. Charlie Ries - (636) 230-6100

[RiesOrthodontics.com](http://RiesOrthodontics.com)



##### Lottmann Realty Group - Re/Max Suburban

Jeff Lottmann - (636) 812-4400

[MySTLRealtor.com](http://MySTLRealtor.com)



COMPUTER CARE / IT SERVICES

DENTIST

INSURANCE AUTO-HOME-LIFE-  
HEALTH-BUSINESS

ORTHODONTIST

REALTOR



##### Allen Roofing & Siding

Lee & Tracy Allen - (636) 391-1117

[ARoofing.net](http://ARoofing.net)



##### Oasis Senior Advisors

Eileen Lambert - (314) 520-1837

[Chesterfield.OasisSeniorAdvisors.com](http://Chesterfield.OasisSeniorAdvisors.com)

### CHESTERFIELD'S "PERSONAL" DENTIST

#### FREE IMPLANT\* & SMILE CONSULT

If you're missing all your teeth or just one, we can help you get eating and smiling again!



\*Dr. Larson is a general dentist and does not imply specialty training. Implants are not a recognized specialty.



150 Long Road • Suite 100  
Chesterfield, MO 63005  
636.537.0447

[www.WildhorseDental.com](http://www.WildhorseDental.com)

# Real Estate RESOURCE

Featured properties may not be listed by the office/agent presenting this brochure.  
Source Multiple Listing Service. All information herein has not been verified and is not guaranteed.  
Supplied by Colleen Lawler & The Irvine Team / Coldwell Banker-Gundaker



Address	Neighborhood	List Price	Sale Price	Sold Date	Beds	Baths	SqFt	Parking
298 Herworth Dr.	Forest Hills Club Estates	\$825,000	\$790,000	08/03/16	4	6	3,458	3
10 Forest Hills Ridge Ct.	Forest Hills Ridge	\$775,000	\$770,000	06/24/16	5	7	5,952	3
2171 Kehrs Ridge Dr.	Kehrs Mill Estates	\$740,000	\$740,000	08/22/16	4	5	3,683	3
30 Crown Manor Dr.	Forest Hills Club Estates	\$711,000	\$711,000	08/15/16	5	6	3,837	3
8 Forest Club Dr.	Forest Hills Club Estates	\$659,000	\$624,000	07/28/16	5	5	4,000	3
1 Forest Club Dr.	Forest Hills Club Estates	\$595,000	\$585,000	10/14/16	4	4	2,976	2
16747 Kehrs Mill Estates Dr.	Kehrs Mill Estates	\$595,000	\$580,000	11/15/16	6	4	3,034	3
2101 Kehrs Ridge Dr.	Kehrs Mill Estates	\$589,900	\$570,000	07/29/16	4	4	3,761	3
2333 Kettington Rd.	Westhampton	\$599,000	\$565,000	09/09/16	4	4	3,356	2
240 Whiting Ln.	Forest Hills Club Estates	\$589,000	\$557,000	07/22/16	4	4	2,998	3
2259 Whitby Rd.	Westhampton	\$559,900	\$540,000	09/28/16	5	5	3,378	2
122 Highgrove Lane	Forest Hills	\$499,900	\$495,000	10/03/16	5	4	2,958	2
16833 Kehrsbrooke Ct.	Kehrs Mill Estates	\$495,000	\$487,500	06/27/16	4	4	3,036	3
2237 Ridgely Woods Dr.	Pleasant Valley Forest	\$474,900	\$465,000	06/29/16	5	4	3,208	2
2208 Kehrs Grove Ct.	Kehrs Mill Estates	\$439,900	\$447,500	08/10/16	4	4	2,647	4

Thinking of selling in 2017?

IT MAY FEEL **COLD** OUTSIDE  
BUT THE  
**HOT SPRING MARKET**  
IS ALMOST HERE!

Call today for a  
**Complementary**  
**Pre-Listing Consultation**  
to get better prepared!



call colleen! 636.391.2100  
TheIrvineTeam.com



HAPPY  
NEW YEAR!!



I Told You  
**Not To  
Flush**  
That!

**\$50 OFF**

Purchase & Installation of a  
**Water Softener - or -  
Reverse Osmosis System**  
Not valid with any other offer. Expiration 12/31/2017.

Water Treatment Services | Water Softener  
Reverse Osmosis | Filters & Backflow | Testing & Repair  
for all your water heater needs too!

**Contact Us Today!**

636.938.1311

www.emplumbing.com

Complete plumbing service since 1947



**We fix leaking, ugly, smelly chimneys  
& keep fire in its place - GUARANTEED!**

**\$10  
Sweep  
Cash**

**ENGLISH  
SWEEP**

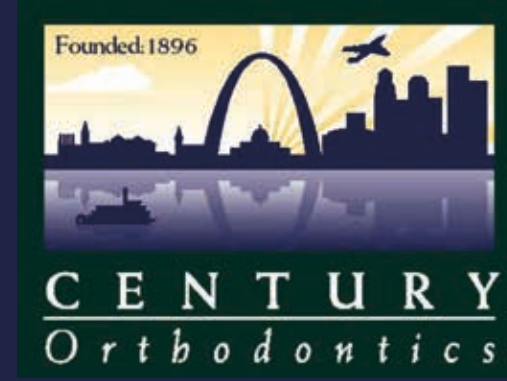
Established in 1979

Angie's List  
Super Service  
2011, 2012  
2013 & 2014 & 2015

Call for a  
**FREE Estimate!**

**www.englishsweep.com • 636-225-3340**  
Over 50% of House Fires are Caused by Unmaintained Fireplaces & Dryer Vents

GOOD-LOOKING SMILES ARE ONLY A CONSULTATION AWAY!



**"Dr. Waxler and Dr. Cavanaugh are outstanding!"**  
Dr. Waxler & Dr. Cavanaugh

Since 1896, we have proudly served this community with  
orthodontic excellence, and we're still running strong.

**3 CONVENIENT  
LOCATIONS TO  
SERVE YOU**

16518 Manchester Road, | Wildwood, MO 63040  
(located in Wildwood Crossing next to Big Bear Grill)

410 Sovereign Ct., Ste 19  
Manchester, MO 63011

8000 Bonhomme, Ste 407  
Clayton, MO 63105  
(Located in the Slavin Building)

**We gladly work with  
your insurance company!**

f in p t

**636-391-0499 | CenturyOrthodontics.com**




PRSRT STD  
US POSTAGE PAID  
WILMINGTON NC  
PERMIT NO. 40

MO\_Clarson Valley



## TAKE CONTROL OF YOUR FINANCIAL FUTURE, TODAY!

.....  .....

If there were a missing fact or piece of information that was costing you money, when would you want to find out about it? Contact Accelerated Wealth today to identify the facts necessary to make a sound financial decision and find money falling through the cracks. We offer a 3 Step Review to review any major financial decision and help you answer the 5 critical questions to assure that your financial decisions are right for you.

**Contact us at 314-222-2788 to schedule a 3 Step Review today!**



**AcceleratedWealth™**